

BINGO RAFFLE ADVISORY BOARD

Annual Report
October 16, 2016 - October 15, 2017



IDAHO LOTTERY ENFORCEMENT DIVISION



TABLE OF CONTENTS

Charitable Gaming in Idaho Overview	1
Letter from the Governor	2
Letter from the Director	3
Idaho Bingo Raffle Board Members by Region	4
Licensed Bingo Vendors in the State of Idaho	5
Licensed Charitable Organizations	6
Organizations Licensed to Conduct Raffles	7
Raffle Statistics for 2017	12
Organizations Licensed to Conduct Bingo	13
Bingo Statistics for 2017	14
Bingo Raffle Revenue	15

CHARITABLE GAMING IN IDAHO

The Idaho Lottery was named by the Legislature to provide oversight of Charitable Gaming in 1992. Last year, licensed charitable gaming organizations decreased by 9% with 179 charitable and non-profit organizations obtaining a charitable gaming license from the Idaho Lottery.

The Idaho Lottery is charged with protecting the public from fraudulently conducted operations and to assure that charitable groups and institutions realize the profits from these games. When a non-profit organization or a charity wishes to conduct a bingo game or a raffle in Idaho, they are required by law to obtain a license from the State through the Idaho Lottery. Licenses for bingo and raffle operations are necessary when the annual gross revenue (bingo) or prize value (raffle) exceeds statutory benchmarks.



LETTER FROM THE GOVERNOR

Dear Friends,

To ensure fairness for the annual fundraising efforts, churches, schools and civic groups across the Gem State depend on the integrity and guidance of the Idaho Lottery's Charitable Bingo Raffle Advisory Board.

For decades, charitable gaming has played a critical role in the fundraising efforts for Idaho's civic clubs and service groups. Idaho charities have depended on raffles and bingo nights to bolster their revenues for the good causes they support. In 2017, Idaho's 179 licensed charitable and non-profit organizations raised over \$4.7 million for beneficiaries through their bingo and raffle operations.

The Bingo Raffle Advisory Board provides needed guidance to charities that operate the games, helping to ensure the fairness and legitimacy of non-profit raffles and community bingo games in Idaho. Working collaboratively with the Idaho Lottery, they ensure that public trust and confidence in these games remains strong.

The Idaho Bingo Raffle Advisory Board and the team at the Idaho Lottery have done an outstanding job protecting the public from fraudulently conducted games. Each year, they ensure that participation in these socially fun and profitable experiences benefits the charities these organizations are intended to serve. Members of the Idaho Bingo Raffle Advisory Board have my deepest appreciation for their service and my confidence in their work this past year.

As Always – Idaho, "Esto Perpetua"

A handwritten signature in blue ink. The signature is stylized and cursive, appearing to read "C.L. Butch Otter".

Governor C.L. "Butch" Otter



LETTER FROM THE DIRECTOR

On behalf of the Idaho Lottery, the Idaho State Lottery Commission, and the Idaho Bingo Raffle Advisory Board, I am pleased to present to you the Annual Report on Charitable Gaming in Idaho for 2017.

Oversight responsibility for charitable gaming (bingo and raffle) in Idaho has been the responsibility of the Idaho Lottery since 1992. As with the Lottery's regular games, maintaining public confidence and the integrity of Idaho's charitable gaming is a matter we take very seriously to ensure those who participate are afforded every opportunity for fairness.

Charitable Gaming oversight in Idaho is a role the Idaho Lottery Charitable Gaming Division welcomes to protect Idaho's citizens from fraudulent operations. We work to ensure the countless non-profit organizations, civic clubs, churches and schools, benefit each year from the proceeds of legally operated charitable gaming events in Idaho. This past year, there were 179 non-profit organizations who applied and received licenses to operate a bingo or raffle game that benefitted their good causes. In total, more than \$4.7 million was returned to Idaho charities.

I am pleased with the work done by the Idaho Lottery Charitable Gaming Division and coordinator Angela Vitek to ensure the integrity of operation and resulting financial success for all Charitable Gaming in Idaho. We often say in Idaho that "**Every Play Pays**" and we encourage everyone to consider participating with your favorite charity.

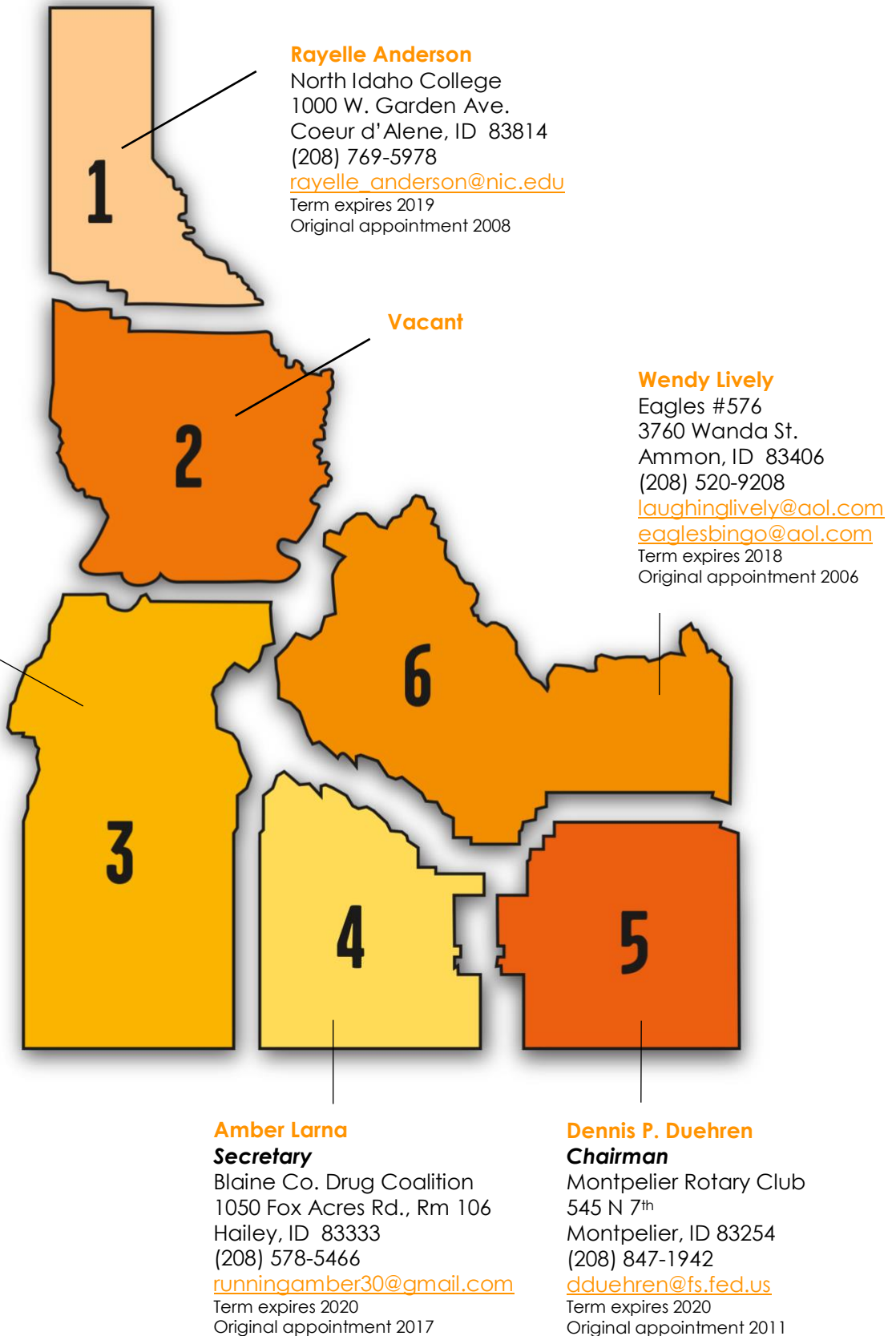
Sincerely,

A handwritten signature in blue ink, appearing to read 'J. Anderson', with a long horizontal flourish extending to the right.

Jeffrey R. Anderson
Director
Idaho Lottery

IDAHO BINGO RAFFLE BOARD MEMBERS BY REGION

Appointments expire the first Monday in January and members serve a three-year term.



LICENSED BINGO VENDORS IN THE STATE OF IDAHO

Companies in Idaho who wish to manufacture, sell, distribute, furnish or supply to any person or entity, any gaming device, equipment or material, must first obtain a vendor's license from the State Lottery Commission. All vendors must pay an annual license fee and maintain records required by the Idaho Lottery.

Manufacturers:

Arrow International, Inc.

Contact: Fred Graf
9900 Clinton Rd
Brooklyn, OH 44144
Phone: 800-321-0757
www.arrowinternational.com
Exp. Date 04/01/18

VKGS, LLC

1045 North 115th Street, Suite 200
Omaha, NE 68154
Phone: 402-9512970 ext. 7853
Exp. Date: 07/01/18

Distributors:

Cactus Bingo Supply, Inc.

Contact: Sam Whitlock/Teresa Whitlock
3210 E. Roeser Rd., Suite 15
Phoenix, AZ 85040
Phone: 800-544-0984
Exp. Date 12/01/18

Spokane PullTab & Bingo Supply

4230 E Mission
Spokane, WA 99202
Phone: 509-747-1339
Toll Free: 800-424-2092
Exp. Date 12/01/18

ZDI Gaming, Inc.

4117 NE Minnehaha
Vancouver, WA 98661
Contact: Melanie Keser
Phone: 360-693-6200
Exp. Date 12/01/18

LICENSED CHARITABLE ORGANIZATIONS

During the period October 16, 2016 to October 15, 2017, there were a total of 179 active charitable gaming licenses in the State of Idaho. Below is a breakdown showing the number of Bingo and Raffle licenses issued by region. Statewide licenses are issued to organizations with chapters or groups that hold fundraising events (raffles) throughout the state, but report to the state-level organization.

Region One		
County	Bingo	Raffle
Benewah	0	0
Bonner	2	6
Boundary	0	0
Kootenai	3	22
Shoshone	0	1
	5	29

Region Two		
County	Bingo	Raffle
Clearwater	0	0
Idaho	0	1
Latah	0	3
Lewis	0	0
Nez Perce	3	10
	3	14

Region Three		
County	Bingo	Raffle
Ada	4	36
Adams	0	0
Boise	0	0
Canyon	4	13
Elmore	1	1
Gem	1	2
Payette	0	1
Owyhee	0	1
Valley	1	3
Washington	2	1
	13	58

Statewide Raffle Licenses		
	20	

Region Four		
County	Bingo	Raffle
Blaine	0	6
Camas	0	0
Cassia	1	1
Gooding	0	0
Jerome	1	0
Lincoln	0	0
Minidoka	1	1
Twin Falls	3	12
	6	20

Region Five		
County	Bingo	Raffle
Bannock	2	4
Bear Lake	0	0
Bingham	0	0
Caribou	0	0
Franklin	0	0
Oneida	0	0
Power	0	0
	2	4

Region Six		
County	Bingo	Raffle
Bonneville	2	10
Butte	1	0
Clark	0	0
Custer	1	1
Fremont	0	2
Jefferson	0	0
Lemhi	1	2
Madison	0	0
Teton	0	0
	5	15

ORGANIZATIONS LICENSED TO CONDUCT RAFFLE(S)

October 16, 2016 to October 15, 2017

License Exp. Date	County	License Name	Gross Sales	Prize Cost	Duck Rental Cost	Net Proceeds	Raffle Expenses	Donation to Charity	Expense %	% to Charity
11/1/16	Kootenai	Lake City Senior Center	NO RAFFLE HELD							
11/1/16	Ada	Bishop Kelly Foundation, Inc.	\$73,776	\$5,000	\$0	\$68,776	\$423	\$68,353	1%	99%
11/1/16	Canyon	Our Lady of the Valley Catholic Church	\$4,190	\$1,200	\$0	\$2,990	\$0	\$2,990	0%	100%
11/1/16	Kootenai	Panhandle Parks Foundation	NO RAFFLE HELD							
11/1/16	Payette	Fruitland Elementary PTO	\$17,421	\$905	\$0	\$16,516	\$2,214	\$14,301	13%	87%
11/15/16	Ada	St. Alphonsus Regional Medical Center	\$17,885	\$694	\$0	\$17,191	\$0	\$17,191	0%	100%
11/15/16	Ada	St. Joseph's School	\$10,996	\$4,240	\$0	\$6,756	\$0	\$6,756	0%	100%
11/15/16	Kootenai	Post Falls Chamber of Commerce	\$21,400	\$25,000	\$0	-\$3,600	\$0	-\$3,600	100%	0%
11/15/16	Statewide	The NRA Foundation, Inc. #1	\$930,773	\$421,094	\$0	\$509,679	\$57,022	\$452,657	11%	89%
11/15/16	Statewide	The NRA Foundation, Inc. #2								
12/1/16	Kootenai	Forward Through Arms, Inc.	\$18,110	\$0	\$0	\$18,110	\$500	\$17,610	3%	97%
12/1/16	Nez Perce	Lewis-Clark State College	\$28,420	\$10,100	\$0	\$18,320	\$400	\$17,920	2%	98%
12/15/16	Blaine	Sun Valley Ballet Foundation	\$2,345	\$0	\$0	\$2,345	\$100	\$2,245	4%	96%
12/15/16	Canyon	Western Whitewater Association	\$2,008	\$1,139	\$0	\$869	\$0	\$869	0%	100%
12/15/16	Kootenai	North ID College Foundation	\$550,000	\$276,592	\$0	\$273,408	\$15,397	\$258,011	6%	94%
12/15/16	Nez Perce	Jack O'Connor Hunting Heritage	\$15,750	\$10,826	\$0	\$4,924	\$86	\$4,838	2%	98%
12/15/16	Twin Falls	St. Edward's Catholic School	\$33,512	\$6,600	\$0	\$26,912	\$0	\$26,912	0%	100%
1/1/17	Bannock	Senior Activity Center, Inc.	NO RAFFLE HELD							
1/1/17	Bonneville	Senior Citizens' Community Center, Inc.	NO RAFFLE HELD							
1/1/17	Bonneville	Idaho Falls School Dist #91 Education Foundation	\$32,550	\$0	\$0	\$32,550	\$0	\$32,550	0%	100%
1/1/17	Latah	Troy Lions Club, Inc.	\$43,245	\$6,275	\$0	\$36,970	\$6,385	\$30,585	17%	83%
1/1/17	Latah	Latah County Vandal Boosters	\$3,310	\$1,657	\$0	\$1,653	\$0	\$1,653	0%	100%
1/1/17	Statewide	Capstone Missions	\$26,000	\$9,580	\$0	\$16,420	\$0	\$16,420	0%	100%
1/1/17	Valley	McCall Area Chamber of Commerce	\$16,760	\$8,613	\$0	\$8,148	\$0	\$8,148	0%	100%
1/15/17	Blaine	Sun Valley Ski Education Foundation	\$17,000	\$120	\$0	\$16,880	\$0	\$16,880	0%	100%
1/15/17	Nez Perce	Lewiston Library Foundation	\$24,200	\$5,000	\$0	\$19,200	\$232	\$18,968	1%	99%
1/15/17	Owyhee	Marsing Community Disaster Fund	\$17,297	\$1,800	\$0	\$15,497	\$0	\$15,497	0%	100%
1/15/17	Statewide	National Wild Turkey Fed. #1	\$19,837	\$0	\$0	\$19,837	\$0	\$19,837	0%	100%
1/15/17	Statewide	National Wild Turkey Fed. #2	\$21,416	\$0	\$0	\$21,416	\$0	\$21,416	0%	100%
1/15/17	Statewide	Disabled American Veterans Department of Idaho	\$12,200	\$0	\$0	\$12,200	\$0	\$12,200	0%	100%
1/15/17	Statewide	ALSAC/St. Jude Children's Research Hospital	\$877,700	\$124,658	\$0	\$753,042	\$65,920	\$687,122	9%	91%
2/1/17	Ada	Capital City VFW Post 63	NO REPORT SUBMITTED							
2/1/17	Minidoka	Minidoka County Senior Center	\$22,318	\$0	\$0	\$22,318	\$0	\$22,318	0%	100%
2/1/17	Ada	Treasure Valley Down Syndrome Association	\$19,520	\$6,120	\$0	\$13,400	\$350	\$13,050	3%	97%
2/1/17	Ada	Special Olympics Idaho	\$83,000	\$18,000	\$0	\$65,000	\$5,564	\$59,436	9%	91%
2/1/17	Ada	Girls on the Run Idaho, Inc.	\$1,000	\$0	\$0	\$1,000	\$350	\$650	35%	65%
2/1/17	Ada	Leadership Idaho Agriculture Foundation	\$17,175	\$0	\$0	\$17,175	\$0	\$17,175	0%	100%
2/1/17	Canyon	Snake River Stampede Cure Foundation, Inc.	NO RAFFLE HELD							
2/1/17	Canyon	St. Paul's Catholic Church	\$36,267	\$9,869	\$0	\$26,398	\$0	\$26,398	0%	100%
2/1/17	Custer	N. American Moose Foundation	NO RAFFLE HELD							
2/1/17	Kootenai	Habitat for Humanity of N. ID	\$450	\$0	\$0	\$450	\$0	\$450	0%	100%
2/1/17	Nez Perce	Knights of Columbus #1024	\$6,500	\$4,900	\$0	\$1,600	\$100	\$1,500	6%	94%

ORGANIZATIONS LICENSED TO CONDUCT RAFFLE(S)

October 16, 2016 to October 15, 2017

License Exp. Date	County	License Name	Gross Sales	Prize Cost	Duck Rental Cost	Net Proceeds	Raffle Expenses	Donation to Charity	Expense %	% to Charity
2/1/17	Nez Perce	All Saints Catholic School	\$40,010	\$25,000	\$0	\$15,010	\$478	\$14,532	3%	97%
2/1/17	Statewide	Junior Achievement of Idaho	\$39,141	\$1,296	\$0	\$37,845	\$488	\$37,358	1%	99%
2/15/17	Ada	Foundation for North American Wild Sheep - Idaho Chapter	\$110,213	\$35,989	\$0	\$74,224	\$0	\$74,224	0%	100%
2/15/17	Ada	Meridian H.S. Band Boosters	NO RAFFLE HELD							
2/15/17	Ada	St. Mary's Catholic Church and School	\$5,025	\$4,223	\$0	\$802	\$0	\$802	0%	100%
2/15/17	Ada	Idaho FFA Foundation, Inc.	\$76,910	\$0	\$0	\$76,910	\$0	\$76,910	0%	100%
2/15/17	Bonneville	Bonneville Joint School District #93	\$78,000	\$0	\$0	\$78,000	\$650	\$77,350	1%	99%
2/15/17	Canyon	Kids First Cast, Inc.	\$585	\$394	\$0	\$191	\$0	\$191	0%	100%
2/15/17	Canyon	The College of Idaho	\$21,217	\$940	\$0	\$20,277	\$0	\$20,277	0%	100%
2/15/17	Gem	J. Curtis Earl Idaho Aviation Foundation, Inc.	\$91,900	\$32,000	\$0	\$59,900	\$8,683	\$51,217	14%	86%
2/15/17	Statewide	Safari Club International - Idaho	\$10,200	\$4,289	\$0	\$5,911	\$827	\$5,084	14%	86%
2/15/17	Twin Falls	People for Pets-Magic Valley Humane Society	\$6,459	\$175	\$0	\$6,284	\$0	\$6,284	0%	100%
2/15/17	Twin Falls	Magic Valley Fellowship Hall	NO RAFFLE HELD							
3/1/17	Ada	Idaho Rural Water Association	\$3,636	\$1,073	\$0	\$2,563	\$507	\$2,057	20%	80%
3/1/17	Ada	Sacred Heart School	\$5,450	\$800	\$0	\$4,650	\$0	\$4,650	0%	100%
3/1/17	Ada	Mountain View Football Boosters, Inc.	\$4,500	\$3,147	\$0	\$1,353	\$310	\$1,042	23%	77%
3/1/17	Ada	Safari Club International - Treasure Valley Chapter	\$27,675	\$13,180	\$0	\$14,495	\$0	\$14,495	0%	100%
3/1/17	Canyon	College of Western Idaho	\$531	\$0	\$0	\$531	\$0	\$531	0%	100%
3/1/17	Elmore	Mountain Home Chamber of Commerce	\$3,093	\$1,250	\$0	\$1,843	\$283	\$1,561	15%	85%
3/1/17	Gem	Back Country Horseman of Idaho	\$37,540	\$10,475	\$0	\$27,065	\$4,512	\$22,553	17%	83%
3/1/17	Kootenai	Sorensen Magnet School of the Arts PTO	\$11,300	\$0	\$0	\$11,300	\$0	\$11,300	0%	100%
3/1/17	Kootenai	Unity Church of North Idaho	NO RAFFLE HELD							
3/1/17	Statewide	Ducks Unlimited # 1	\$509,174	\$256,123	\$0	\$253,051	\$0	\$253,051	0%	100%
3/1/17	Statewide	Ducks Unlimited # 2								
3/1/17	Statewide	Ducks Unlimited # 3								
3/1/17	Twin Falls	Magic Valley Rehabilitation Services, Inc.	\$1,780	\$0	\$0	\$1,780	\$0	\$1,780	0%	100%
3/15/17	Ada	El Korah Shriners	\$103,220	\$37,172	\$0	\$66,048	\$12,643	\$53,405	19%	81%
3/15/17	Fremont	Henry's Fork Foundation	\$44,500	\$4,700	\$0	\$39,800	\$4,800	\$35,000	12%	88%
3/15/17	Kootenai	Post Falls Food Bank	\$183,000	\$150,000	\$0	\$33,000	\$12,631	\$20,369	38%	62%
3/15/17	Kootenai	Sting Premier Soccer Club, Inc.	\$44,640	\$1,274	\$0	\$43,366	\$1,229	\$42,137	3%	97%
4/1/17	Bonner	Sandpoint Lions Club	\$40,723	\$11,300	\$0	\$29,423	\$1,199	\$28,224	4%	96%
4/1/17	Ada	Department of Idaho Veterans of Foreign Wars	\$45,160	\$17,604	\$0	\$27,556	\$1,370	\$26,186	5%	95%
4/1/17	Ada	Ronald McDonald House Charities of Idaho	\$460	\$0	\$0	\$460	\$0	\$460	0%	100%
4/1/17	Ada	St. Mark's Catholic Community	\$15,470	\$488	\$0	\$14,982	\$0	\$14,982	0%	100%
4/1/17	Bonner	The Festival at Sandpoint	\$5,040	\$0	\$0	\$0	\$0	\$5,040	0%	100%
4/1/17	Bonneville	Prosperity Project	\$3,890	\$770	\$0	\$3,120	\$0	\$3,120	0%	100%
4/1/17	Canyon	Boys & Girls Club of Nampa	\$78,653	\$5,000	\$0	\$73,653	\$3,862	\$69,791	5%	95%
4/1/17	Canyon	Destination Caldwell	NO REPORT SUBMITTED							
4/1/17	Shoshone	The Bridge Community Center	NO REPORT SUBMITTED							
4/1/17	Statewide	JDRF International	\$2,150	\$0	\$0	\$2,150	\$0	\$2,150	0%	100%
4/1/17	Statewide	Rotary International District #5400	\$51,982	\$11,594	\$0	\$40,388	\$1,681	\$38,707	4%	96%
4/15/17	Ada	Society of St. Vincent de Paul	\$30,000	\$16,000	\$0	\$14,000	\$1,594	\$12,406	11%	89%
4/15/17	Ada	Riot Cheer Boosters	\$2,541	\$0	\$0	\$2,541	\$0	\$2,541	0%	100%
4/15/17	Bonner	Community Cancer Services	\$2,040	\$0	\$0	\$2,040	\$0	\$2,040	0%	100%
5/1/17	Kootenai	Post Falls American Legion #143	NO RAFFLE HELD							

ORGANIZATIONS LICENSED TO CONDUCT RAFFLE(S)

October 16, 2016 to October 15, 2017

License Exp. Date	County	License Name	Gross Sales	Prize Cost	Duck Rental Cost	Net Proceeds	Raffle Expenses	Donation to Charity	Expense %	% to Charity
5/1/17	Ada	ID Veterans Assistance League	\$2,074	\$0	\$0	\$2,074	\$0	\$2,074	0%	100%
5/1/17	Ada	Supportive Housing and Innovative Partnerships	\$7,450	\$500	\$0	\$6,950	\$11,325	-\$4,375	100%	0%
5/1/17	Ada	Idaho Outfitters & Guides Association	\$615	\$345	\$0	\$270	\$0	\$270	0%	100%
5/1/17	Bonner	Sandpoint Junior Tackle Football League	\$60,080	\$12,792	\$0	\$47,288	\$625	\$46,663	1%	99%
5/1/17	Kootenai	North Idaho Building Contractors Association	\$41,399	\$19,470	\$0	\$21,929	\$530	\$21,399	2%	98%
5/1/17	Kootenai	North Idaho Fly Casters	\$12,701	\$5,045	\$0	\$7,656	\$140	\$7,516	2%	98%
5/1/17	Kootenai	Newby-Ginnings of North ID, Inc.	\$11,200	\$3,114	\$0	\$8,086	\$1,879	\$6,207	23%	77%
5/1/17	Lemhi	Fraternal Order of Eagles #2316 - Auxiliary	\$1,292	\$263	\$0	\$1,029	\$0	\$1,029	0%	100%
5/1/17	Twin Falls	Boys & Girls Club - Magic Valley	\$30,000	\$0	\$0	\$30,000	\$0	\$30,000	0%	100%
5/1/17	Twin Falls	Twin Falls Senior Citizens Fed.	NO RAFFLE HELD							
5/15/17	Ada	St. Luke's Health Foundation	\$2,663	\$212	\$0	\$2,451	\$0	\$2,451	0%	100%
5/15/17	Bonner	Sandpoint High School	\$51,350	\$0	\$0	\$51,350	\$2,006	\$49,344	4%	96%
5/15/17	Bonner	Arts Alliance, Inc.	\$4,890	\$4,890	\$0	\$0	\$455	-\$455	100%	0%
5/15/17	Idaho	Summit Academy	\$42,135	\$10,000	\$0	\$32,135	\$0	\$32,135	0%	100%
5/15/17	Kootenai	Kootenai Health Foundation, Inc.	\$7,751	\$900	\$0	\$6,851	\$0	\$6,851	0%	100%
5/15/17	Nez Perce	Lewis-Clark American Legion Baseball, Inc.	\$30,000	\$15,000	\$0	\$15,000	\$0	\$15,000	0%	100%
5/15/17	Washington	National Oldtime Fiddlers, Inc.	\$2,418	\$427	\$0	\$1,991	\$195	\$1,796	10%	90%
6/1/17	Ada	Rocky Mountain Football Association, Inc.	NO RAFFLE HELD							
6/1/17	Ada	Idaho Governor's Cup Scholarship Fund, Inc.	NO RAFFLE HELD							
6/1/17	Ada	Wish Granters, Inc.	\$2,339	\$0	\$0	\$2,339	\$0	\$2,339	0%	100%
6/1/17	Blaine	Pioneer Montessori School	\$7,550	\$0	\$0	\$7,550	\$0	\$7,550	0%	100%
6/1/17	Blaine	Hailey Rotary Foundation, Inc.	\$22,955	\$0	\$0	\$22,955	\$4,108	\$18,847	18%	82%
6/1/17	Blaine	Blaine County Drug Coalition	\$117,800	\$51,313	\$0	\$66,487	\$12,475	\$54,012	19%	81%
6/1/17	Bonneville	Upper Snake River Cutthroates	\$11,083	\$9,690	\$0	\$1,393	\$0	\$1,393	0%	100%
6/1/17	Kootenai	Pappy Boyington Det. # 966, Marine Corps League	\$10,798	\$0	\$0	\$10,798	\$829	\$9,969	8%	92%
6/1/17	Kootenai	St. George's Catholic Church	\$13,339	\$3,050	\$0	\$10,289	\$96	\$10,193	1%	99%
6/1/17	Nez Perce	Boys & Girls Clubs of the Lewis Clark Valley	\$62,190	\$5,466	\$0	\$56,724	\$1,443	\$55,280	3%	97%
6/15/17	Bannock	Holy Spirit Catholic School	\$11,900	\$5,600	\$0	\$6,300	\$0	\$6,300	0%	100%
6/15/17	Latah	Appaloosa Museum & Heritage Center	\$2,450	\$38	\$0	\$2,412	\$0	\$2,412	0%	100%
6/15/17	Statewide	Juvenile Diabetes Research Foundation	\$77,555	\$0	\$0	\$77,555	\$0	\$77,555	0%	100%
6/15/17	Twin Falls	Twin Falls County Sheriff's Search & Rescue	NO REPORT SUBMITTED							
6/15/17	Twin Falls	St. Luke's Magic Valley Health Foundation	\$2,000	\$543	\$0	\$1,457	\$0	\$1,457	0%	100%
7/1/17	Ada	Opera Idaho, Inc.	\$9,715	\$120	\$0	\$9,595	\$0	\$9,595	0%	100%
7/1/17	Ada	Boise Metro Chamber of Commerce	\$6,630	\$0	\$0	\$6,630	\$0	\$6,630	0%	100%
7/1/17	Ada	ID Juvenile Justice Association	\$1,200	\$411	\$0	\$789	\$0	\$789	0%	100%
7/1/17	Ada	Junior League of Boise, Inc.	NO REPORT SUBMITTED							
7/1/17	Canyon	Nampa Christian Schools	\$12,600	\$3,000	\$0	\$9,600	\$343	\$9,257	4%	96%
7/1/17	Kootenai	Rathdrum Lions Club	\$19,305	\$10,679	\$0	\$8,626	\$0	\$8,626	0%	100%
7/1/17	Statewide	Idaho Youth Ranch, Inc.	\$22,155	\$0	\$0	\$22,155	\$0	\$22,155	0%	100%
7/1/17	Twin Falls	Magic Valley Harley Owners	\$7,000	\$0	\$0	\$7,000	\$0	\$7,000	0%	100%
7/15/17	Bonneville	ID Falls Rotary Foundation #380	\$79,360	\$0	\$13,654	\$65,706	\$0	\$65,706	0%	100%
7/15/17	Bonneville	Tautphous Park Zoological Soc.	\$2,171	\$0	\$0	\$2,171	\$125	\$2,046	6%	94%
7/15/17	Canyon	Chase Away the Clouds, Inc.	\$1,000	\$0	\$0	\$1,000	\$0	\$1,000	0%	100%
8/1/17	Canyon	Community Council of Idaho, Inc.	\$7,450	\$1,847	\$0	\$5,603	\$0	\$5,603	0%	100%

ORGANIZATIONS LICENSED TO CONDUCT RAFFLE(S)

October 16, 2016 to October 15, 2017

License Exp. Date	County	License Name	Gross Sales	Prize Cost	Duck Rental Cost	Net Proceeds	Raffle Expenses	Donation to Charity	Expense %	% to Charity
8/1/17	Nez Perce	Willow Center, Inc.	\$14,595	\$0	\$0	\$14,595	\$1,949	\$12,646	13%	87%
8/1/17	Valley	McCall Men's Golf Association	\$9,000	\$0	\$0	\$9,000	\$250	\$8,750	3%	97%
8/15/17	Bannock	Portneuf Greenway Foundation	NO RAFFLE HELD							
8/15/17	Canyon	St. Alphonsus Medical Center Nampa Health Foundation	\$2,000	\$0	\$0	\$2,000	\$10	\$1,990	1%	100%
9/1/17	Nez Perce	American Legion Lewis Clark #13	\$16,688	\$1,974	\$0	\$14,714	\$723	\$13,991	5%	95%
9/1/17	Kootenai	First Judicial District CASA Program	\$89,950	\$106,715	\$0	-\$16,765	\$16,255	-\$33,020	100%	0%
9/15/17	Cassia	Veterans of Foreign Wars #3043	\$323	\$0	\$0	\$323	\$0	\$323	0%	100%
9/15/17	Ada	Boise Nordic Foundation, Inc.	\$6,897	\$100	\$0	\$6,797	\$0	\$6,797	0%	100%
9/15/17	Ada	Meridian Police Employee Association	\$1,100	\$0	\$0	\$1,100	\$0	\$1,100	0%	100%
9/15/17	Ada	Spay Neuter Idaho Pets, Inc.	\$3,834	\$6	\$0	\$3,828	\$0	\$3,828	0%	100%
9/15/17	Bonneville	The Shepherd's Inn	\$10,395	\$0	\$0	\$10,395	\$345	\$10,050	3%	97%
9/15/17	Kootenai	St. Pius X Catholic Church	\$21,950	\$2,000	\$0	\$19,950	\$1,888	\$18,062	9%	91%
9/15/17	Statewide	Idaho State Snowmobile Assoc.	\$32,071	\$16,394	\$0	\$15,677	\$1,023	\$14,654	7%	93%
10/1/17	Bonneville	Fraternal Order of Eagles #576	NO RAFFLE HELD							
10/1/17	Nez Perce	Nez Perce Eagles #631	\$1,039	\$325	\$0	\$714	\$0	\$714	0%	100%
10/1/17	Bannock	Century High School	\$11,870	\$3,680	\$0	\$8,190	\$0	\$8,190	0%	100%
10/1/17	Blaine	Swift Ranch Therapeutic Equestrian Center	\$9,825	\$0	\$0	\$9,825	\$700	\$9,125	7%	93%
10/1/17	Kootenai	Classical Christian Academy	\$21,520	\$9,915	\$0	\$11,605	\$152	\$11,453	1%	99%
10/1/17	Kootenai	North ID College Booster Club	\$14,800	\$2,306	\$0	\$12,494	\$0	\$12,494	0%	100%
10/1/17	Statewide	Rocky Mountain Elk Foundation, Inc. - North	\$207,580	\$51,404	\$0	\$156,176	\$4,616	\$151,560	3%	97%
10/1/17	Statewide	Rocky Mountain Elk Foundation, Inc. - South	\$261,028	\$70,951	\$0	\$190,077	\$3,558	\$186,519	2%	98%
10/1/17	Statewide	The Idaho Foodbank	\$3,330	\$0	\$0	\$3,330	\$0	\$3,330	0%	100%
10/1/17	Twin Falls	Hospice Visions, Inc.	\$2,050	\$0	\$0	\$2,050	\$0	\$2,050	0%	100%
10/15/17	Valley	Cascade Senior Center	\$556	\$279	\$0	\$278	\$0	\$278	0%	100%
10/15/17	Twin Falls	Canyon Ridge High School Booster Club	\$23,830	\$0	\$0	\$23,830	\$0	\$23,830	0%	100%

RAFFLE STATISTICS

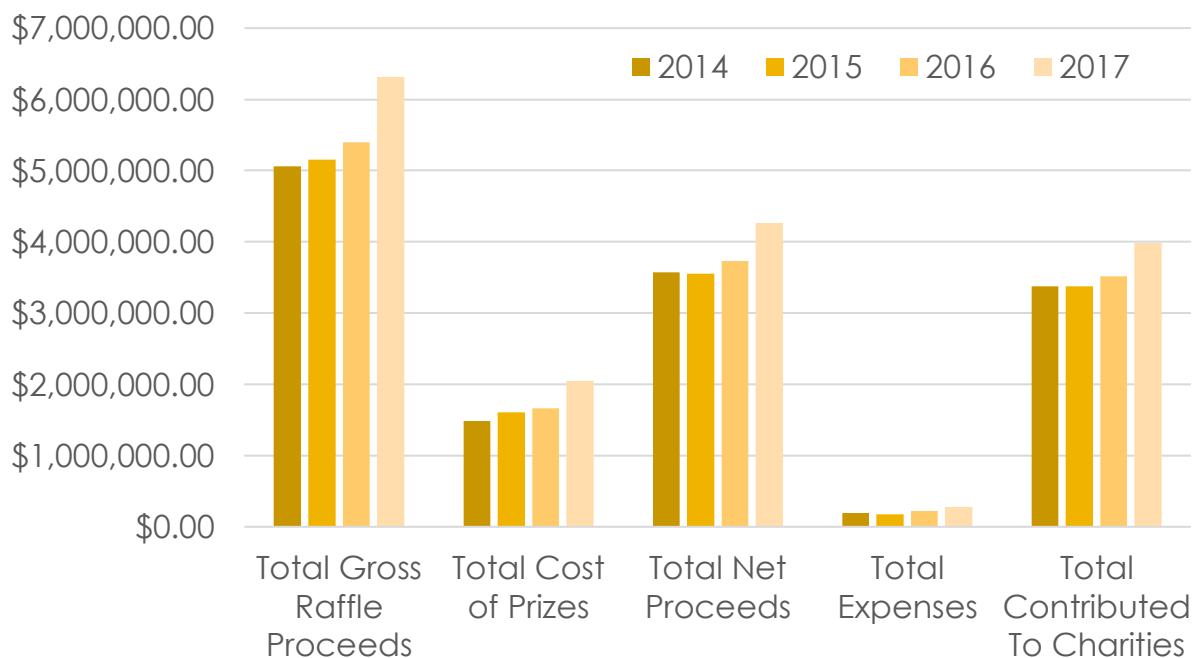
October 16, 2016 to October 15, 2017

Totals for Raffle:

Total Gross Raffle Proceeds	\$6,312,707.59
Total Cost of Prizes	\$2,050,653.27
Total Net Proceeds	\$4,262,054.63
Total Expenses	\$280,488.81
Total Contributed to Charities	\$3,981,565.51
Total % Contributed to Charities	93%

Highest Grossing Raffle Licensees:

Licensee	Gross Total	Net Total	Donation
1. The NRA Foundation, Inc. #1, #2	\$930,773.00	\$509,679.00	\$452,657.00
2. ALSAC/St. Jude Children's Research Hospital	\$877,700.00	\$753,042.00	\$687,122.00
3. North Idaho College Foundation	\$550,000.00	\$273,408.00	\$258,011.00
4. Ducks Unlimited – Idaho #1, #2, #3	\$509,174.00	\$253,051.00	\$253,051.00
5. Rocky Mountain Elk Foundation, Inc - South	\$261,028.00	\$190,077.00	\$186,519.00
6. Rocky Mountain Elk Foundation, Inc - North	\$207,580.00	\$156,176.00	\$151,560.00
7. Post Falls Food Bank	\$183,000.00	\$33,000.00	\$20,369.30
8. Blaine County Drug Coalition	\$117,800.00	\$66,487.00	\$54,012.00
9. Foundation for North American Wild Sheep - ID	\$110,213.00	\$74,224.29	\$74,224.29
10. El Korah Shriners	\$103,220.00	\$66,048.00	\$53,405.00



ORGANIZATIONS LICENSED TO CONDUCT BINGO

October 16, 2016 to October 15, 2017

License Expiration Date	County	Licensee Name	Gross Sales	Prize Payout	Prize Payout %	Total Expense	Expense %	Donation to Charity	% to Charity
11/1/16	Ada	Kuna Senior Citizens Association	\$36,499	\$22,233	61%	\$6,722	18%	\$7,635	21%
11/1/16	Kootenai	Lake City Senior Center	\$105,506	\$70,791	67%	\$2,550	2%	\$31,857	30%
12/1/16	Twin Falls	Women of the Moose #185	\$49,634	\$29,962	60%	\$4,630	9%	\$10,724	22%
1/1/17	Canyon	Giving Hand, Inc.	\$458,101	\$276,047	60%	\$69,362	15%	\$122,244	27%
1/1/17	Bannock	Senior Activity Center, Inc.	\$25,111	\$14,008	56%	\$986	4%	\$11,000	44%
1/1/17	Bonneville	Senior Citizens' Community Center, Inc.	\$41,832	\$26,251	63%	\$4,252	10%	\$11,329	27%
1/15/17	Ada	Meridian Senior Center	\$113,782	\$74,156	65%	\$14,854	13%	\$22,756	20%
1/15/17	Canyon	Caldwell Eagles #3691	\$14,784	\$9,610	65%	\$115	1%	\$2,957	20%
1/15/17	Jerome	Jerome Senior Citizen Center	\$19,237	\$11,983	62%	\$595	3%	\$6,660	35%
2/1/17	Ada	Capital City VFW Post #63	\$13,320	\$6,350	48%	\$1,123	8%	\$29,000	218%
2/1/17	Minidoka	Minidoka County Senior Center	\$33,348	\$22,292	67%	\$5,485	16%	\$8,000	24%
2/15/17	Washington	Weiser Elks Lodge #1683	\$15,785	\$10,231	65%	\$537	3%	\$5,050	32%
2/15/17	Washington	Weiser Senior Citizens, Inc.	\$11,517	\$7,655	66%	\$471	4%	\$3,547	31%
2/15/17	Twin Falls	Magic Valley Fellowship Hall, Inc.	\$35,851	\$20,903	58%	\$1,015	3%	\$13,842	39%
3/1/17	Nez Perce	YWCA of Lewiston/Clarkston	\$23,169	\$16,438	71%	\$3,129	14%	\$3,981	17%
4/1/17	Bonner	Knights of Columbus #2888	\$3,936	\$2,790	71%	\$257	7%	\$889	23%
4/1/17	Elmore	Elks Lodge #2276 - Mountain Home	\$110,130	\$71,763	65%	\$14,177	13%	\$22,726	21%
4/1/17	Gem	Gem County Senior Citizens, Inc.	\$69,364	\$41,324	60%	\$730	1%	\$25,000	36%
5/1/17	Kootenai	Post Falls American Legion Post #143	\$32,486	\$17,835	55%	\$978	3%	\$10,100	31%
5/1/17	Lemhi	Fraternal Order of Eagles #2316 Auxiliary	\$19,198	\$12,622	66%	\$1,299	7%	\$3,850	20%
5/15/17	Canyon	Caldwell Senior Center	\$63,926	\$32,168	50%	\$991	2%	\$32,000	50%
7/1/17	Bannock	Lava Lions	\$102,601	\$54,327	53%	\$3,106	3%	\$43,642	43%
7/1/17	Kootenai	Greene Idaho Foundation, Inc.	\$314,016	\$204,969	65%	\$23,965	8%	\$64,143	20%
7/1/17	Ada	Opera Idaho, Inc.	\$514,801	\$313,116	61%	\$91,828	18%	\$108,407	21%
8/1/17	Twin Falls	American Legion Twin Falls Post #7	\$59,095	\$40,234	68%	\$7,519	13%	\$11,819	20%
9/1/17	Custer	American Legion Post #16	\$16,674	\$13,310	80%	\$977	6%	\$3,083	18%
9/1/17	Nez Perce	American Legion Lewis Clark Post #13	\$49,713	\$33,079	67%	\$760	2%	\$16,806	34%
9/15/17	Butte	Lost River Senior Citizens, Inc.	\$9,673	\$7,099	73%	\$258	3%	\$2,000	21%
9/15/17	Cassia	Veterans of Foreign Wars #3043	\$40,144	\$24,853	62%	\$1,239	3%	\$13,800	34%
10/1/17	Bonneville	Fraternal Order of Eagles #576	\$356,350	\$216,672	61%	\$58,069	16%	\$81,607	23%
10/1/17	Nez Perce	Nez Perce Eagles #631	\$43,811	\$27,652	63%	\$998	2%	\$10,125	23%
10/15/17	Valley	Cascade Senior Center	\$30,171	\$18,168	60%	\$1,927	6%	\$10,000	33%

BINGO STATISTICS

October 16, 2016 to October 15, 2017

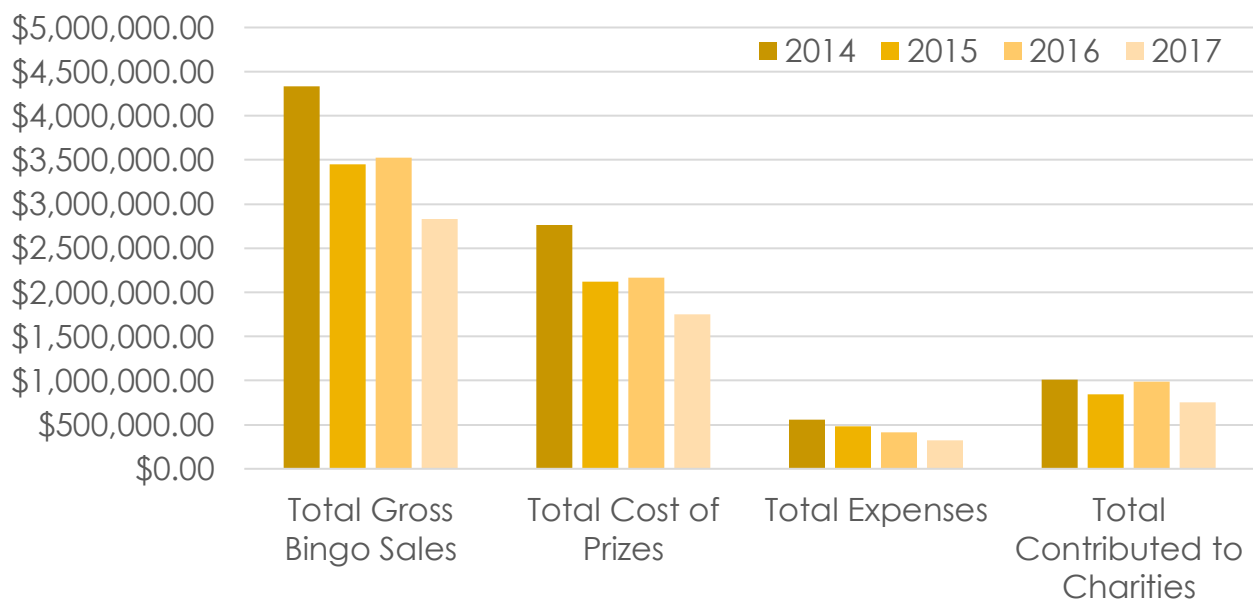
Totals for Bingo:

Total Gross Bingo Sales	\$2,833,563.23
Total Prizes Paid	\$1,750,890.77
Total Bingo Expenses	\$324,903.93
Total Contributed to Charities	\$750,578.19
Total % Contributed to Charities	26%

Highest Grossing Bingo Licensees:

Licensee	Gross Total	Donation
1. Opera Idaho, Inc.	\$514,801.00	\$108,407.00
2. Giving Hand, Inc.	\$458,101.00	\$122,244.00
3. Fraternal Order of Eagles #576	\$356,349.50	\$81,607.49
4. Greene Idaho Foundation	\$314,016.00	\$64,143.40
5. Meridian Senior Center	\$113,782.00	\$22,756.00
6. Elks Lodge #2276 – Mountain Home	\$110,130.00	\$22,726.47
7. Lake City Senior Center	\$105,506.00	\$31,857.00
8. Lava Lions	\$102,601.45	\$43,641.78
9. Gem County Senior Citizens, Inc.	\$69,363.50	\$25,000.00
10. Caldwell Senior Center	\$63,926.00	\$32,000.00

Annual Bingo Comparison:



BINGO/RAFFLE REVENUE

October 16, 2016 to October 15, 2017

Bingo

Number of Licensed Organizations	34
Total Gross Bingo Proceeds Reported	\$2,833,563.23
Total Prize Payout Reported	\$1,750,890.77
Payout Percentage	61.79%
Total Expenses Reported	\$324,903.93
Expense Percentage	*11.47%
Actual Reported Amount Contributed to Charities	\$750,578.19
Percent to Charities	**26.49%
Minimum Contribution to Charity per Statute	\$566,712.65

*Maximum percentage of total proceeds allowed for expenses 18%

**Minimum percentage of total proceeds donated to charity is 20%

Raffle

Number of Licensed Organizations	145
Total Raffle Proceeds Reported	\$6,312,707.59
Total Cost of Prizes Reported	*\$2,050,653.27
Net Raffle Proceeds Reported	\$4,262,054.63
Total Expenses Reported	\$280,488.81
Expense Percentage	**6.58%
Actual Reported Amount Contributed to Charities	\$3,981,565.51
Percent to Charities	93.42%
Minimum Contribution to Charity per Statute	\$852,410.93

**Includes Duck Rental Costs

**Maximum percentage of net proceeds allowed for expenses is 20%

CHARITABLE GAMING IDAHO LOTTERY INCOME EXPENSES

October 16, 2016 to October 15, 2017

Income

Organizations who apply for a Charitable Gaming License are required to pay a fee to the Idaho Lottery. The fee for first time applicants is \$100.00. The fee for license renewal is based on the organization's bingo/raffle revenues for the previous year are as follows:

Gross Revenue less than \$25,000	\$100.00
Gross Revenue \$25,000 to \$75,000	\$200.00
Gross Revenue over \$75,000	\$300.00

Income from Licensing Fees

Bingo License Fees	\$3,900.00
Bingo Late Fees	\$200.00
Raffle License Fees	\$23,200.00
Raffle Late Fees	\$550.00
Vendor Fees*	\$2,500.00

Total Income

\$30,350.00

*In order to distribute or manufacture supplies and equipment for bingo or raffles, a vendor must be approved and licensed in the state of Idaho. The licensing fee in Idaho is \$500.00 annually.

expenses

Lottery Staff Salary (.7 FTE)	\$32,582.19
Application Background Investigations	\$10,740.00
Supplies	\$2,000.00
Legal Counsel (Deputy Attorney General)	\$15,169.60
Hearing Officer	\$0.00
Bingo/Raffle Advisory Board Travel Expenses	\$0.00
Lottery Staff Travel (Audits, Technical Assistance to Licensed Organizations, Conferences)	\$0.00

Total Expenses

\$60,491.79

Income Less Expenses

(\$30,141.79)



IDAHO LOTTERY ENFORCEMENT DIVISION

1199 Shoreline Lane, Boise, ID 83702 | 208-334-2277 | www.idaholottery.com